

# Welcome to the East Area Planning Committee

- This planning committee meeting is held in public, but it is not a public meeting.
- There will be opportunity for the public to address the committee on each application.
- If you wish to speak for or against a planning application, you will need to have either requested it in advance, or fill out and hand in one of the available speaker forms.
- Information on meeting protocol and conduct at committee is set out in the Code of Practice.
- You can find a copy of the Code of Practice in the committee agenda, just before the first planning application report.

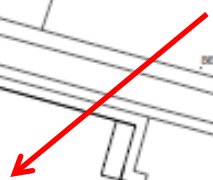
[www.oxford.gov.uk](http://www.oxford.gov.uk)



# Site Location Plan



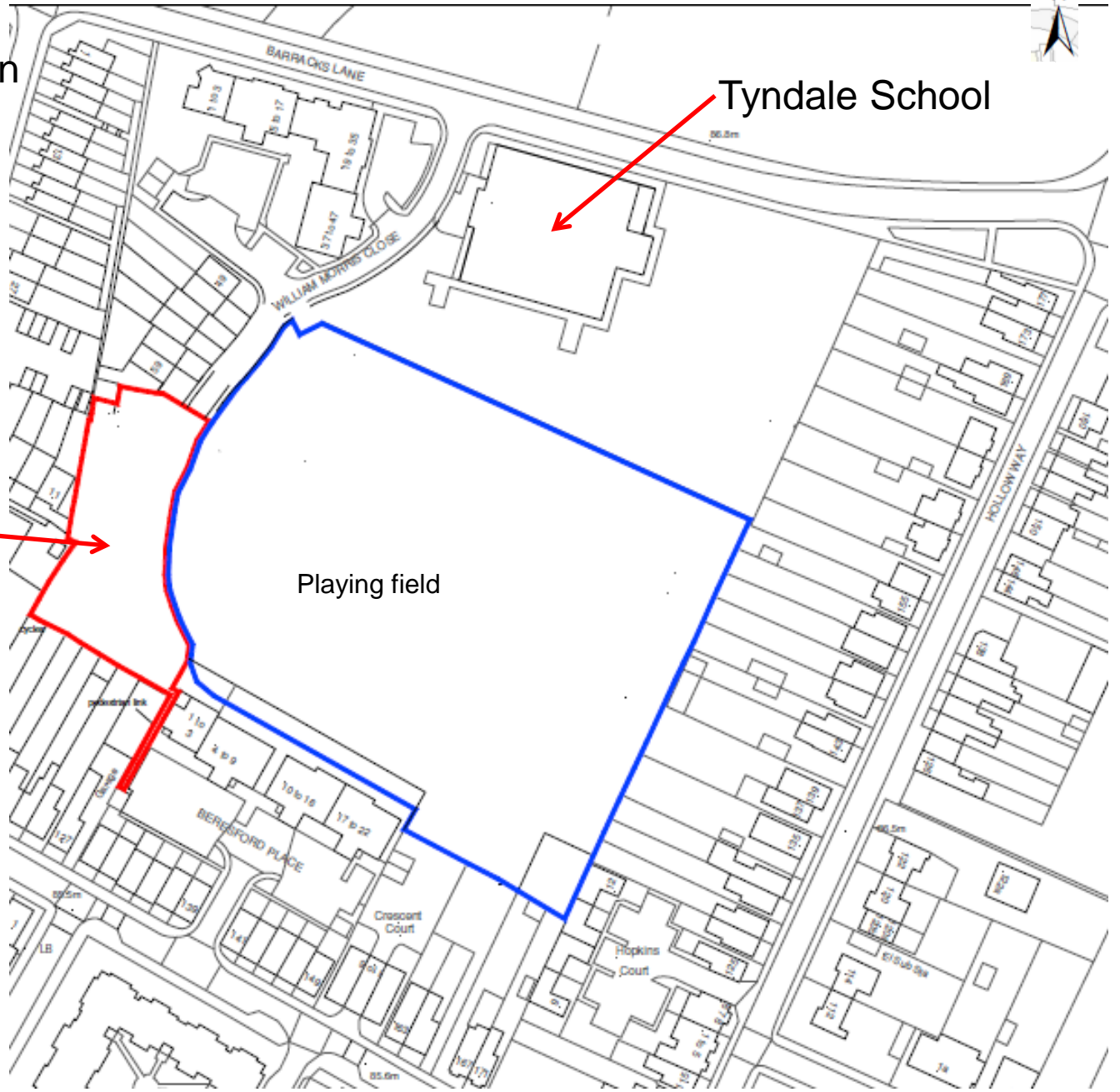
Tyndale School



50 The site



Playing field



Beresford Place

Crescent Close

William Morris Close

Crescent Road

Playing field

View of the site from the north looking south



Crescent Close

William Morris Close

52

The site



Properties in Crescent Road



53

Southern end of the site



Playing fields

Properties in Beresford Place



View from the site looking east across the playing fields

Crescent Close

William Morris Close

Tyndale School

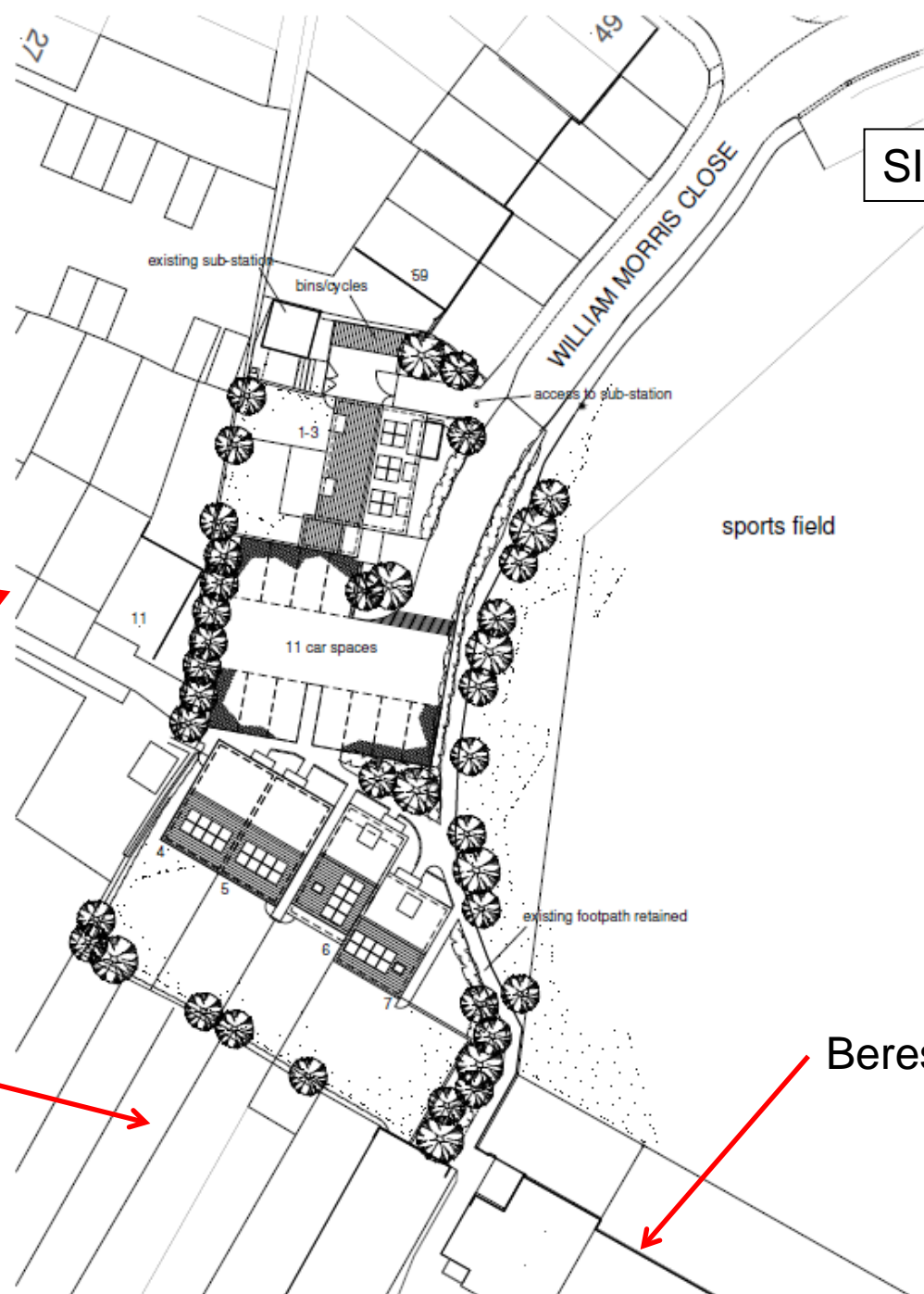
55

View from the site looking north





**SITE LAYOUT**



56  
Crescent Close

Crescent Road  
properties

Beresford Place



Plots 1-3



plan - bin/ cycle store



left side elevation

front elevation

right side elevation

rear elevation



ground floor plans - plots 1-3



first floor plans - plots 1-3



second floor plans - plots 1-3

57



left side elevation - plots 1-3

front elevation - plots 1-3

right side elevation - plots 1-3

rear elevation - plots 1-3

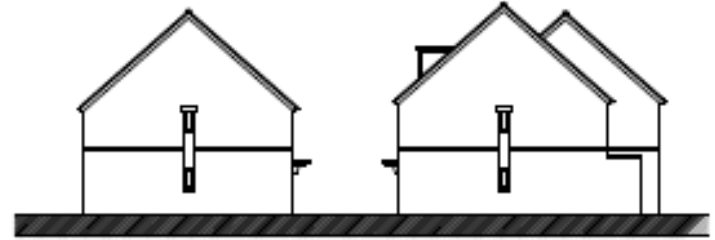
Plots 4-7



second floor plans - plots 6 & 7



first floor plans - plots 4-7



left side elevation - plot 5

right side elevation - plot 6



ground floor plans - plots 4-7



rear elevation - plots 4-7

58



left side elevation - plot 7

front elevation - plots 4-7

right side elevation - plot 4